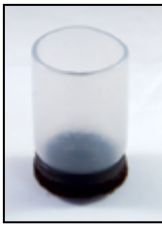




### Clear Vinyl Stretch Sleeve Glides



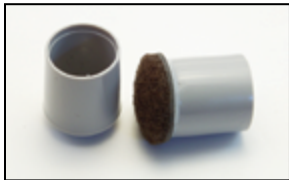
IEC's transparent *vinyl sleeve glides* stretch to fit over various leg sizes, in both round and square shapes. For square legs increase size by 1/4 inch. The flexible sleeve will form to the square leg. A heavy-duty dark brown felt pad is bonded to the bottom of the sleeve to reduce scratching, noise and rust stains.

Typical applications are chairs, tables, desks, stools, bar stools, walkers, crutches.

### Clear PVC Felt Glides

IEC's clear *PVC felt glides* are made to fit the specified round leg size but will stretch slightly. They have a red-brown felt pad.

### Vinyl Replacement Chair Tips (with or without Felt)



IEC's hard grey *vinyl chair tip floor protectors* reduce scratches, noise and rust stains.

The felt base tips are best for wood floors, while the vinyl (without felt) tips are best for sliding applications. The bottom of the vinyl tips are slightly curved.

Typical applications are chairs, tables, desks, stools, bar stools, walkers and crutches.

### Sled Glides



IEC's clear *plastic and felt sled glides* snap over rods or tubing to reduce scratching and noise. Also available with heavy-duty floor protection felt bonded to the plastic glide.

### CLEAR VINYL STRETCH SLEEVE FELT FLOOR PROTECTORS

P/N	Fits Dia. (Inches)
IL24C-SLV-CLR-FELT	1/2 to 5/8
IL24-SLV-CLR-FELT	5/8 to 3/4
IL25-SLV-CLR-FELT	7/8 to 1-1/16
IL26-SLV-CLR-FELT	1-1/8 to 1-1/4
IL27-SLV-CLR-FELT	1-1/2 to 1-5/8
IL27B-SLV-CLR-FELT	1-5/8 to 1-3/4



### CLEAR PVC FELT GLIDES

P/N	Fits Dia. (Inches & mm)
IL24C-PVC-CLR-FELT	1/2 (12mm)
IL24B-PVC-CLR-FELT	5/8 (16mm)
IL24A-PVC-CLR-FELT	3/4 (18mm)
IL24A2-PVC-CLR-FELT	13/16 (20mm)
IL24-PVC-CLR-FELT	7/8 (24mm)
IL25-PVC-CLR-FELT	1 (25mm)

### VINYL REPLACEMENT CHAIR TIPS (WITH OR WITHOUT FELT)

P/N (Without FELT)	P/N (With FELT)	SIZE (Inches)
IL24C-REPL-VNL	IL24C-REPL-FELT	1/2
IL24B-REPL-VNL	IL24B-REPL-FELT	5/8
IL24A-REPL-VNL	IL24A-REPL-FELT	3/4
IL24-REPL-VNL	IL24-REPL-FELT	7/8
IL25-REPL-VNL	IL25-REPL-FELT	1
IL25A-REPL-VNL	IL25A-REPL-FELT	1-1/8

### CLEAR PLASTIC AND FELT SLED GLIDES

P/N	P/N	Tube/Rod Dia.
IL24D-SLED-CLR	IL24D-SLED-FELT	3/8
IL24C2-SLED-BLK	IL24C2-SLED-FELT	7/16
IL24B-SLED-CLR	IL24B-SLED-FELT	5/8
IL24A-SLED-CLR	IL24A-SLED-FELT	3/4
IL24-SLED-CLR	IL24-SLED-FELT	7/8
IL25-SLED-CLR	IL25-SLED-FELT	1
IL25A-SLED-CLR	IL25A-SLED-FELT	1-1/8



**TUBE CAPS & PLUGS**

SLIP ON FELT / SLIDERS

NON-SKID SLEEVES

**Slip-On Felt Feet**

These *slip-on felt feet* are available in two sizes. They slip over round or square legs with or without feet already installed in the legs. Useful for both noise reduction and floor protection.



**Felt Cup Peel & Stick Floor Protectors**

IEC's dark brown *felt cup, peel & stick floor protectors* reduce scratches, noise and rust stains. They are available in round, square and rectangular sizes. The 2 x 1/2 inch size has a curved (dome) shaped bottom.



**Slip-On Sliders**

IEC's *slip-on sliders* are designed to fit over round or square chair legs and existing glide feet. The brown sleeve sliders have a black base and the grey sleeve sliders have an off-white base. Also available with felt base. (See Slip-On Felt section).

**Non-Skid Sleeves**

IEC's *transparent non-skid sleeves* stretch to fit over various leg sizes, in both round and square shapes. For square legs increase size by 1/4 inch. The flexible sleeve will form to the square leg. The non-skid bottom of the sleeve will reduce scratching, noise, rust and stains.

Typical applications are chairs, tables, desks, stools, bar stools, walkers, crutches.

**SLIP ON FELT FEET**

P/N	Leg Size	Base Dia.	Color
IL26-FELT-SO-BR	3/4-1-1/4	1-1/4	BROWN
IL26-FELT-SO-GR	3/4-1-1/4	1-1/4	GREY
IL27-FELT-SO-BR	1-1-1/2	1-1/2	BROWN
IL27-FELT-SO-GR	1-1-1/2	1-1/2	GREY

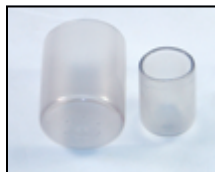


**FELT CUP "PEEL & STICK" FLOOR PROTECTORS**

P/N (round)	P/N (square)	SIZE (Inches)
IL25-CUP-FELT-RD	IL25-CUP-FELT-SQ	1
IL26-CUP-FELT-RD	IL26-CUP-FELT-SQ	1-1/4
	IL26A2-CUP-FELT-SQ	1-1/5
IL27-CUP-FELT-RD	IL27-CUP-FELT-SQ	1-1/2
IL27A-CUP-FELT-RD	IL27A-CUP-FELT-SQ	2
	IL26-CUP-FELT-RE	1-1/4 x 1-1/2
	IL27G3-CUP-FELT-RE	3-1/5 x 9/16
	IL27A-CUP-FELT-RE-DOME	2 x 1/2

**SLIP ON SLIDERS**

P/N	Leg Size	Base Dia.	Color	Pkg
IL26-SLDR-SO-BR	3/4-1-1/4	1-3/4	BROWN	1
IL26-SLDR-SO-GR	3/4-1-1/4	1-3/4	GREY	1
IL27-SLDR-SO-BR	1-1-1/2	1-3/4	BROWN	1
IL27-SLDR-SO-GR	1-1-1/2	1-3/4	GREY	1



**CLEAR NON-SKID SLEEVES**

P/N	Fits Dia. (Inches)
IL24C-SLV-CLR	1/2 to 5/8
IL24-SLV-CLR	5/8 to 3/4
IL25-SLV-CLR	7/8 to 1-1/16
IL26-SLV-CLR	1-1/8 to 1-1/4
IL27-SLV-CLR	1-1/2 to 1-5/8
IL27B-SLV-CLR	1-5/8 to 1-3/4